



RICHMONDS

# Bursledon Road, Hedge End, Southampton, SO30 0DA

£825,000

A four-story, 4-bedroom Scandinavian style residence with far reaching views.

Offering generously proportioned and adaptable living areas, epitomising versatile accommodation.

Discover the pinnacle of contemporary living with a luxury kitchen featuring Corian granite work surfaces and a premium range cooker. Completing the experience, the bathrooms are appointed with high-quality sanitary ware and fittings, ensuring an exceptional standard of modern living.

To the outside is off-road parking for numerous vehicles coupled with a garage and a large rear garden.

## Other Information

Tenure: Freehold

Approximate Age: Built approx. 11 years ago

Heating: Gas central heating with air flow circulation system

Windows: Double glazing

Energy Rating: TBC

Sellers Position: Searching for a property in the local area

## Local Information:

Council Tax: F

Local Authority: Eastleigh Borough Council

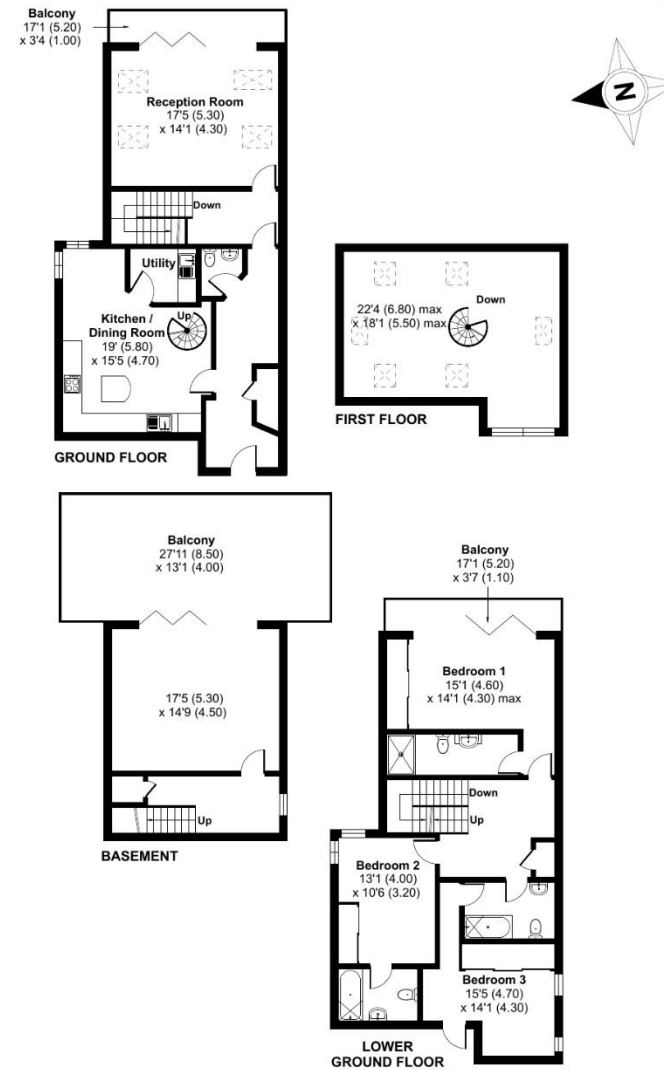




## Bursledon Road, Hedge End, Southampton, SO30

Approximate Area = 2352 sq ft / 218.5 sq m

For identification only - Not to scale



Floor plan produced in accordance with RICS Property Measurement Standards incorporating International Property Measurement Standards (IPMS2 Residential). © ncheccom 2024. Produced for Richmonds Property Services Ltd. REF: 1119516

**Agents Note:** The sellers of the property have provided the above information to us and we are therefore reliant on them providing the correct information. The floor plan and sizes are to be used as a guide only. Please check room sizes prior to ordering carpets or furniture. If you require confirmation on any particular point for specific purposes please contact our office for further information. If you have other questions about this property, please telephone **01489 789933**

R545 Ravensworth 01670 713330

Lankester House, 1 Freegrounds Road, Hedge End, Southampton SO30 0HG • 01489 789933 • [admin@richmondsproperty.co.uk](mailto:admin@richmondsproperty.co.uk)

